



GAT MONTHLY MEMBERSHIP PROGRESS REPORT

Results as of: 10/31/2023

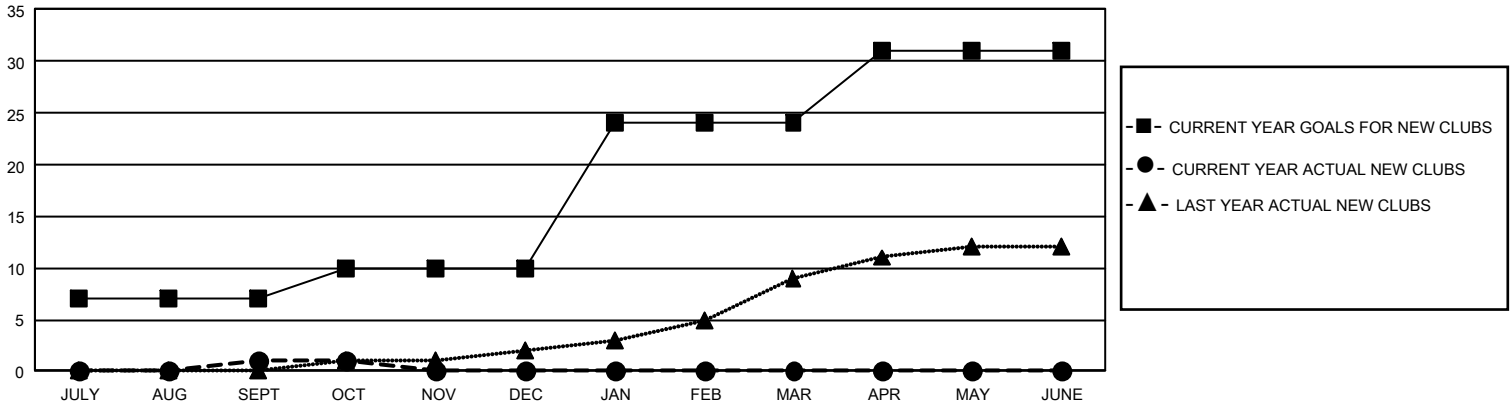
GMT Constitutional Area 5 - J, Group G

REPORT DOES NOT INCLUDE CLUBS IN UNDISTRICTED AREAS.

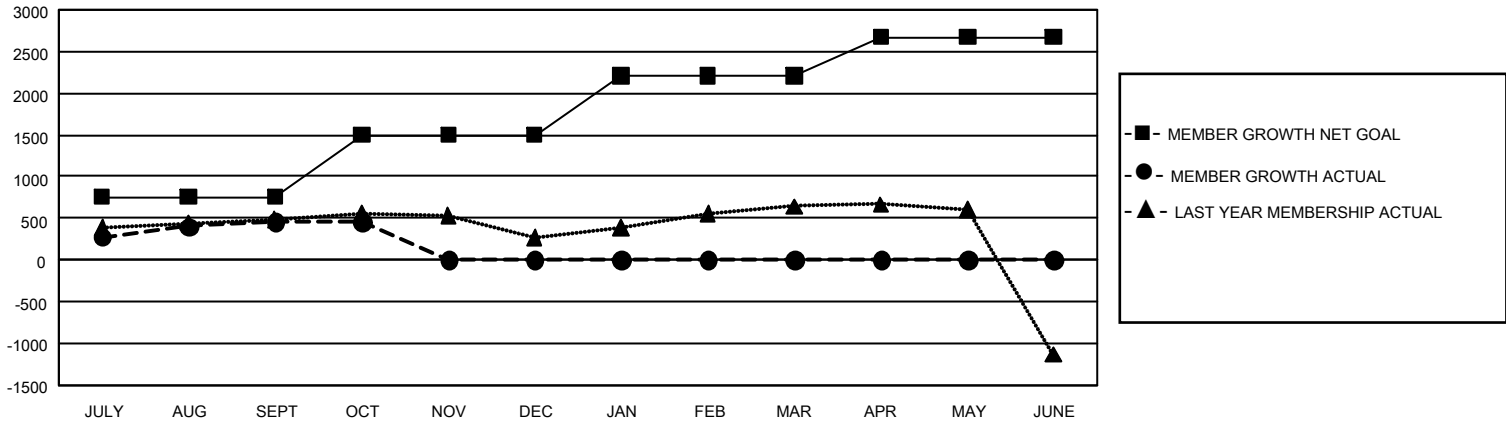
Clubs			
RESULTS FOR 2023-2024			
QUARTER	NEW CLUB GOAL	NEW CLUBS	DROPPED CLUBS
JULY/AUG/SEPT	21	1	0
OCT/NOV/DEC	9	0	0
JAN/FEB/MAR	42	0	0
APR/MAY/JUNE	21	0	0

Members			
RESULTS FOR 2023-2024			
QUARTER	MEMBER GROWTH NET GOAL	MEMBER GROWTH ACTUAL	DROPPED MEMBERS ACTUAL (including transfers)
JULY/AUG/SEPT	758	1,169	661
OCT/NOV/DEC	743	175	170
JAN/FEB/MAR	712	0	0
APR/MAY/JUNE	462	0	0

GOALS AND ACTUAL NEW CLUBS CUMULATIVE



GOALS AND ACTUAL MEMBERS CUMULATIVE



DROPPED CLUBS: 0	563 CLUBS OF 1,255 ADDED 1 OR MORE NEW MEMBERS	GENDER DISTRIBUTION	
	DROPPED MEMBERS DECEASED 116 CLUB CANCELLED 0 OTHER 715 TOTAL 831	CLICK HERE FOR CUMULATIVE MEMBERSHIP DATA	MALE 30,204 (76.53%)
FEMALE 9,259 (23.46%)			
		NON BINARY 0 (0.00%)	
		PREFER NOT TO ANSWER 2 (0.01%)	
		TOTAL FAMILY UNIT MEMBERS 12,637	
		FAMILY MEMBERS PAYING HALF DUES 7,141	